



## HOUSE SIZE

**30 squares**

**Suitable for 10m frontage**

*Where building to a Zero Lot Boundary is permissible*



4



2.5



2

## FLOOR AREAS

|                     |                  |
|---------------------|------------------|
| Floor area          | <b>112.2 sqm</b> |
| Garage floor area   | <b>32.4 sqm</b>  |
| Porch floor area    | <b>4.9 sqm</b>   |
| Alfresco floor area | <b>13.5 sqm</b>  |
| First floor area    | <b>114 sqm</b>   |
| <hr/>               |                  |
| Total floor area    | <b>277 sqm</b>   |

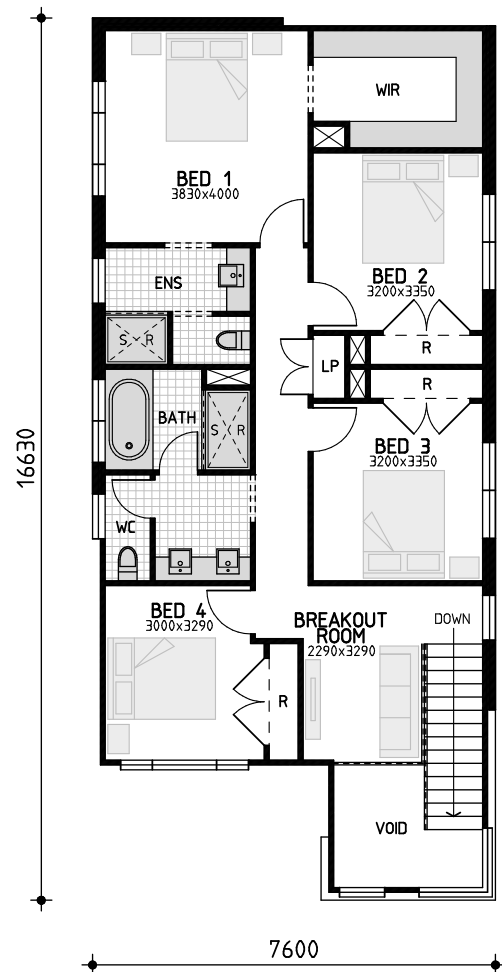
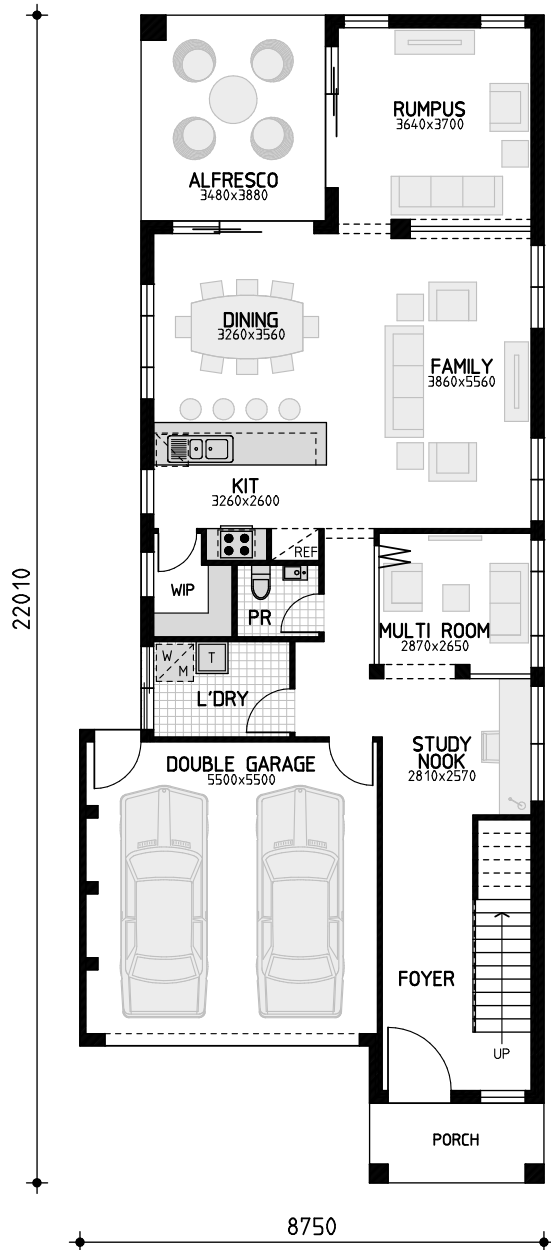
## PACKAGE PRICE

All pricing based upon our Essence Inclusions Range

Base package price includes traditional facade. Alternative facade upgrades are available at an additional cost.

Please contact us to obtain our current pricing and promotions.

Our Aspire Collection is a range of double storey designs that combine flair with elegance. Each design has been carefully crafted to provide both functionality and lifestyle flexibility, and our range of options means that you can amend your chosen floor plan to suit your specific needs. With a contemporary feel and offering free-flowing living, The Aspire Collection infuses relaxed family living into smart, contemporary design to create the ultimate range of urban retreats for modern families.



LET YOUR HOME BE OUR MASTERPIECE.