



HOUSE SIZE

26 squares

Suitable for 15m frontage



FLOOR AREAS

Floor area	192.5 sqm
Garage floor area	32.8 sqm
Alfresco floor area	18.5 sqm
Total floor area	243.8sqm

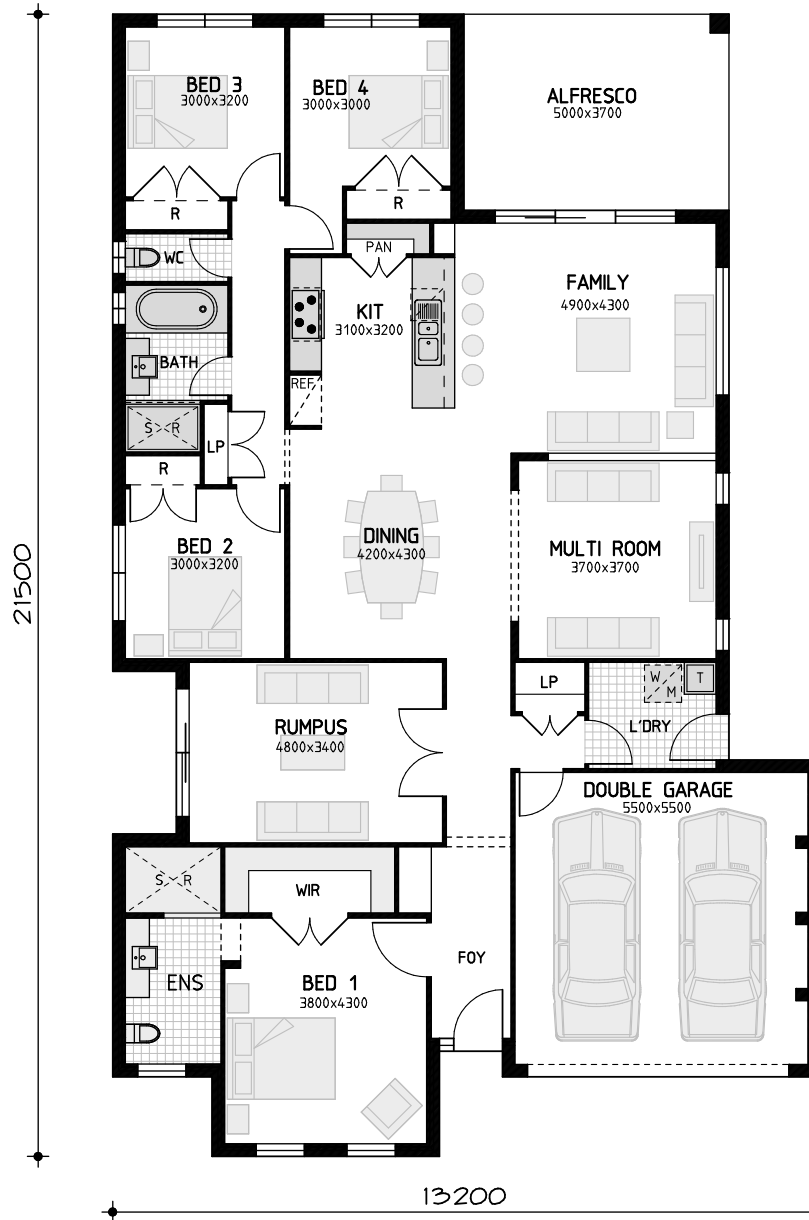
PACKAGE PRICE

All pricing based upon our Essence Inclusions Range

Base package price includes traditional facade. Alternative facade upgrades are available at an additional cost.

Please contact us to obtain our current pricing and promotions.

The Genesis Collection is our range of stunning, single storey homes. Our clever, stylish designs match contemporary lifestyles, making ample living space and outstanding build quality very affordable. With open-plan living in-demand, our designs are spacious and modern, and combine function and style to cater for the modern family. The Genesis comes in a range of sizes to suit blocks of all shapes and sizes. With a range of floor plans and inclusions, you'll find the perfect design to suit your taste and lifestyle.



FLOOR PLAN

LET YOUR HOME BE OUR MASTERPIECE.